

1400 / F1400 Mortise Lock Exit Devices

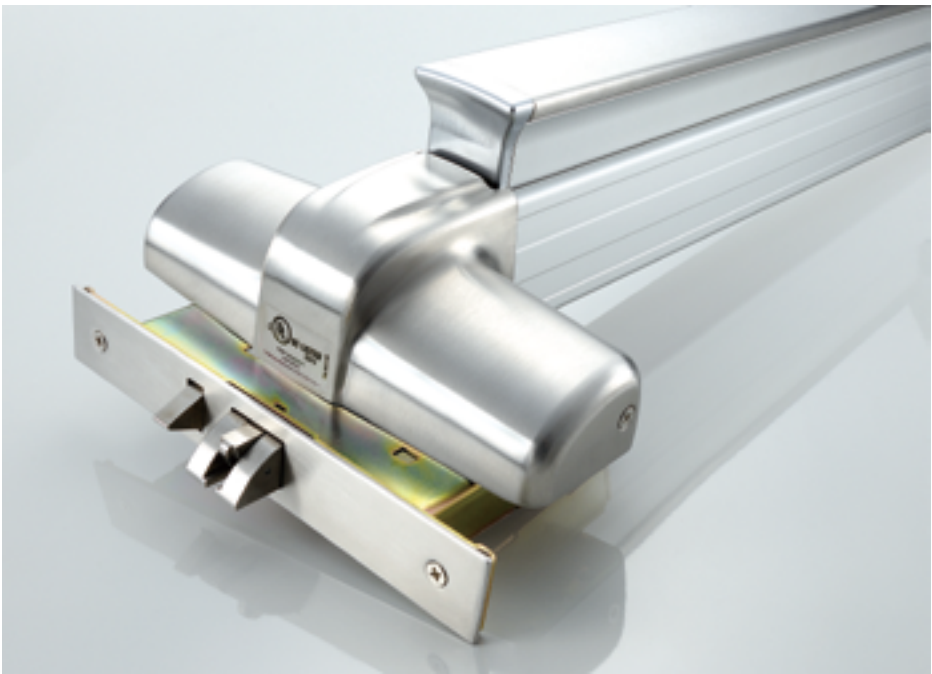
Mortise

Applications

- Offices, schools, banks, assisted living facilities and other institutions or commercial buildings.

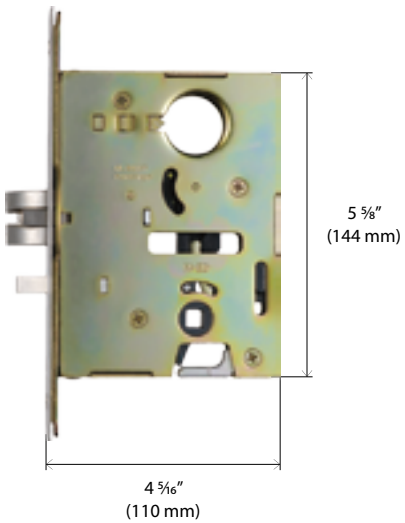
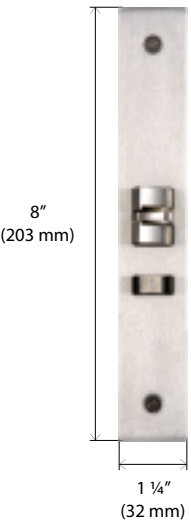
Doors & Preparations

- For all types of single and double doors with/without a mullion. For mullions, see page 33.
- For new or retrofit installation into other manufacturers' devices.
- 1-3/4" to 2-1/4" thick, up to 4' wide opening; for thicker doors, consult factory.
- Furnished standard for 1-3/4" thick, 3' wide opening.
- For maximum door opening applications and listings for Fire Exit Devices, see page 45.



Specifications

Certification/Compliance	<ul style="list-style-type: none">• Panic devices UL/cUL listed for UL305 and ANSI/BHMA A156.3 Grade 1 Panic Hardware.• UL/cUL Fire rated for 3-hour Fire Exit Hardware, conforms to UL10C and UBC7-2. Also complies with NFPA 80 Fire doors and windows.• Exit devices, levers, trims and pulls comply with American Disability Act (ADA) and NFPA 101 life safety code.	
Center Case	<ul style="list-style-type: none">• Latch bolt of mortise case can be adjusted for full retraction by Adjustment Finger with fine tuning of adjustment screw in center case.	
Strikes	Panic P/N. 306	Fire P/N. 306
	See page 25.	
Dogging	<ul style="list-style-type: none">• NOT available on Fire Exit Hardware.• Dogging options available for LD, CD, ED (ELR). See page 32.• Flat/Hex key dogging standard.	
Fasteners	<ul style="list-style-type: none">• Machine screws and wood screws are furnished standard.	
Sex Bolts (SNB)	<ul style="list-style-type: none">• Required when used with wood, composite or non-reinforced hollow metal doors. For Exit Only device, specify 6-1024 SNB (No. 10-24). For device with trim, specify 2-1024 SNB (No. 10-24). See page 9.	
Electrical Functions	Can be interfaced with building security systems: <ul style="list-style-type: none">• AL Alarm Exit• DE Delayed Egress Device• E Electric Mortise Lock• ELR Electric Latch Retraction• RX Request to Exit• SS Signal Switch See page 37.	
Device Centerline from Finished Floor	<ul style="list-style-type: none">• 39-5/8" (1006mm).	
Latchbolt	<ul style="list-style-type: none">• Stainless Steel, deadlocking, 3/4" (19mm) throw.	
Handing	<ul style="list-style-type: none">• Trim field reversible.• Device non-handed except for Double Cylinder option. For Double Cylinder, specify handing when required.	
Cylinders	<ul style="list-style-type: none">• NOT furnished standard, specify when required. For Cylinder details, see page 31.	
Trim	<ul style="list-style-type: none">• The device & trim are sold separately, easy to mix and match, see page 21.	



Mortise Case

The 1400 model Mortise lock is equipped with a 3/4" (19mm) Anti-friction stainless steel latch bolt which is handing reversible without moving the cover from the case. It has a non-handed auxiliary bolt for deadlocking and a faceplate with an adjustable bevel. Fits door machined per ANSI A115.1 (type 86) Mortise Lock preparation.